

FEBRUARY
2024

RiverCountry CO-OP

IN THIS ISSUE

- 2 REPORT FROM BRUCE MLSNA, CEO
- 5 AGRONOMY UPDATE
- 6 FEED UPDATE
- 7 MARATHON FEED & GRAIN UPDATE
- 8 GRAIN UPDATE
- 9 ENERGY UPDATE
- 10 RETAIL UPDATE
- 12 NEW EMPLOYEES
- 13 UPCOMING EVENTS
- 14 SCHOLARSHIP RECIPIENTS

YOUR GUIDE TO LOCAL FARMING NEWS & MORE

Mid-Year Co-op

New Year, new opportunities.

First, I want to thank you for your business in 2023. Your Cooperative ended its fiscal year last August and had a successful financial year. While revenues and bottom line are an important part of the Co-op, this is only one part of the story as we have made considerable investments in the Co-op in all areas to improve operations, service, efficiency and technology to name a few.

As part of the benefits of being a member and doing business with the Co-op, you will be receiving a dividend check in March of this year on your purchases. This means, along with our stock redemption policy, the Co-op will send an excess of a million dollars back to the members.



In September 2023, River Country Co-op exercised its option to purchase the remaining ownership percentage of Marathon Feed and Grain, LLC of Marathon City. The Heise family of Todd and Christine will continue to work for River Country Co-op at this facility. The facility will be the hub for grain, agronomy, feed and fuel in this eastern market with its existing facility and new offices.



Your Cooperative retired over \$400,000 of patron equities last year. Here is Judy Vine from Granton, WI, receiving her check from Lisa Hardy.

As we enter 2024, there are a lot of uncertainties in our ag business. Commodity prices have decreased in our ag sector from corn, beans and milk, while expenses have increased substantially for everyone. This makes the need for better yields, milk production at lower costs a priority for all and we understand that. Here are some investments and improvements we have made and/or are developing.

Marathon Feed and Grain. Last September, the Co-op exercised its purchase option and purchased the remaining percentage of the LLC ownership from the Heise family. We are happy that Todd and Christine Heise will continue to work for the Co-op in similar roles out of the Marathon Feed and Grain branch in Marathon City. With the additional assets added in Marathon City the last five years, the acquisition will allow more synergies to be developed, creating cost reductions. The MF&G complex will be the main hub for feed, grain, agronomy and fuel as well as an office for customer service in this market.

In our agronomy division, our main focus is on service. Last spring was challenging as all of our geographical areas of the trade area started spring planting at the same time. As we looked back and challenged ourselves on how we can improve, we made the decision to add additional dry fertilizer tender units and applicators in the

dry fertilizer and spraying fleet. Along with adding units to improve efficiency and keep costs down, we added software programs that allow work orders from inception to be directly transmitted to the applicator. This saves time and money and reduces human error. On the human resource side, we have had some retirements of key personnel. While you cannot get back the experience lost, the added dimension is a younger staff with new ideas and the enthusiasm to put them in motion.

While you cannot get back the experience lost, the added dimension is a younger staff with new ideas and the enthusiasm to put them in motion.

Update

by Bruce Mlsna, CEO



Your Cooperative's feed division has made great strides. **Volumes were up 10% year over year in 2023. Our feed business portfolio has been growing at a higher pace in fiscal year 2024.** Again, reflecting on our growth and looking at improvements, we have ordered and/or received several new feed delivery units. We have expanded our nutrition staff and have implemented higher quality procurement controls. We've also added new products and new mixing equipment to ensure the best quality feed is made out of our facilities. In developing synergies with MF&G and other branches, our feed business has shown considerable improvement in savings since the inception of the merger. In our property and improvement plan, we have demolished the former Edgar feed plant site and are looking at options in '24 for the former Merrill feed plant.

Volumes were up 10% year over year in 2023. Our feed business portfolio has been growing at a higher pace in fiscal year 2024.

The fall of '23 grain harvest proved to be a record one. All facilities were filled to capacity and our Fall '23 corn intake volume increased over one million bushels to almost nine million bushels of handle. While crop growth conditions are never clear, we are looking at options of adding more bin storage to help with the growing demand. To consider this, we are looking at developing some long-term higher investment options at facilities to improve unload times

along with smaller improvements made at specific sites to help with grain quality and update older systems. Last fall, we invested in an additional four semi-trailers and tractors to move the grain as all our handle is exclusively done by trucks.

In the Energy division, which consists of bulk fuel and propane and the distribution of lube oil, the "weather person" has not been on our side. Warm temperatures in fall of '23 and for the most part this winter have challenged our volumes, especially this past December. We still continue to grow our business by acquisition and organic growth. **Last year we opened over 500 new propane accounts for new customers and grew our energy business by twenty percent.** We have rotated some older equipment and are working on more synergies using software application in routing and distribution. As we are primarily a

continued...

The final piece was the concrete mill being dismantled.



This past August, we tore down the old feed plant in Edgar. The facility has two grain bins which the Co-op still operates.



Drone picture of facility with our bulk fuel plant, August 2023.



CENEX customer of our regional Co-op, we will share in the record dividends they will distribute back to us in 2024.

It's not easy in any business.

Your Co-op's insurance programs have increased by 20%+ in the last year along with other increased operating expenses. As we carry term debt, we are very cognizant of what we are investing our money in and our return on investment. We are conservative on our forecast modeling for '24 and we use this basis of information in every decision we make. We are selling non-performing assets and/or closing businesses that do not have a suitable return on investment. These changes are made in the best interests of everyone as losses carried by a division have to be made up in other areas. Our focus is to be proactive and to have long term sustainability.

Again, thank you for the business. I hope your '24 is a good one for you personally and professionally. ■



January morning "Sundog" over Five Star Dairy in Elk Mound, WI.

Sundogs appear when sunlight passes through a thin veil of ice crystal clouds and the ice acts as a prism, refracting the light. While rainbows typically signify an end to the rain, Sundogs typically mean that rain will begin within the next 24 hours.



2023 Co-op Annual Meeting

The 2023 Annual Stockholders meeting was held in Curtiss, WI, on December 14th.

President, Randy Mahr, presided over the meeting, which included about 75 stockholders present and around 200 people streaming on Facebook. The audit report was presented by Clifton Larsen Allen accounting firm, which showed sales revenue of around \$350 million for the year and a net savings of around 2%.

CEO, Bruce Mlsna, gave an updated report on business operations from 2022/2023 and highlighted the positive changes and asset improvement investments that the Co-op completed. Bruce also gave facility updates highlighting grain storage expansion and other improvements the Co-op will be investing in 2024.

There was a director election held. Mail ballots were counted with the winner, Brad Juedes, who will serve a 3 year term. The directors selected Randy Mahr as President, Brad Juedes as Vice-President and Eric Vogel as Secretary.



Back Row: Doug Geiger, Eric Vogel, Les Danielson, Marc Boettcher
Front Row: Jeremy Goessl, Randy Mahr, Brad Juedes, Steve Wall

RiverCountry
CO-OP



Here Comes 2024!

by Steve Hanvold, VP of Agronomy
steveh@rivercountrycoop.com | 715-492-0875

From a career standpoint, it's hard to even say 2024. We're all getting older I guess. Each year brings challenges and opportunities; 2024 will be no different. But, there'll be some things to keep in mind as we go forward.

I think genetics of every brand have taken a huge step forward. In spite of generally dry conditions, yields across the area (certainly not everywhere) were better than expected, and this will continue. Keep in touch with your sales specialist. New varieties and what's best for your farm are evolving every day.

2023 was a terrible year for fertilizer and crop protection supply. Production issues and the Mississippi river were real problems. As far as the river goes, we started out with way too MUCH water. The current was too brisk to safely move barges up the river. In fact, the lock and dam in Muscatine, IA, had to be shut down for a bit to make repairs to it. A short time later, (with the lack of precipitation), there wasn't enough water. Barges had to be loaded light to get up the river. **There's definitely a threat of supply disruptions this year too.** Hopefully there's been enough precipitation in the fall and winter to make sure the river is navigable. Of course, there's the ships shooting at each other in the middle east. That has a tendency to elevate pricing too. Companies have to either take out substantially more insurance on the product, or they have to sail a far longer route to safely pass. All that being said, pricing is generally down from last year; in many cases, substantially.

As I have stated for a while now, weed control will be more of a challenge every year going forward. Simply, the weeds have grown immune to the products that we're using to control them. Again, make sure you have a clear understanding of what your plan for control is in 2024. Your sales specialist can help with that. We definitely have seed and crop protection products that give you the best chance to succeed.



Dan "Boone" Bowe retired after 40 years of being the Bloomer agronomy location manager. Phil Wester will be his replacement, effective January 2024.

...weed control will be more of a challenge every year going forward.

As we see days getting longer, we realize that spring is getting closer. Stay in touch with us and let's all have a banner year! **I would be remiss if I didn't say THANK YOU to all of the wonderful patrons from years past and years coming.** I'm amazed, always, by the tremendous support we receive. ■



In an effort to be more efficient and improve service, the Co-op's agronomy division purchased three more of these semi tenders to add to our existing fleet to be ready to go for the spring of 2024. The units have five compartments with a capacity to carry 24 tons.



New dry application equipment purchased for spring 2024.



Feed Updates

by Brian Streveler, VP of Feed
brians@rivercountrycoop.com | 715-226-5637

Greetings from the feed division. Winter finally made its appearance. Snow is on the ground and we had below zero temperatures and 30 below wind chills. This weather may be good news to the energy department but it is hard on your feed division. We have some of the same problems you do on the farm, with vehicles that don't want to start and equipment that doesn't work as well as it should. Then, who wants to go outside and work in this weather, but we are in the business of feeding animals. So, we continue to work hard every day to eliminate as many issues as we can to deliver quality feed to your farm for animals to be fed. With that being said, **I want to thank everyone for their business.** It is great to be part of an industry that puts food on the table and to be able to work with a great group of customers! The feed division had another successful year. We finished the year with more than 50 million in sales. **This is a 14% increase over last year and the 4th year we have seen double digit growth.** Thank you for all your support!

With this growth, we continue to invest in people. **We have hired Whitney Coleman as an additional feed nutritionist.** Whitney comes to us with a love for people and animals. She has been working in our western territory and she is focused on dairy animals. We have also added many drivers and employees in the mill to keep up with the additional volume. Our great staff of dedicated individuals are here to assist you and are focused on producing high quality feed for your operation. We work hard every day to make our feed operations as efficient as possible. Thank you to everyone that calls in feed orders early and allows us flexibility to deliver feed. This goes a long way to keeping our trucks full when delivering. We will also be working more closely with our MF&G division to save on delivery cost and move production around when it

Our bag route service continues to grow in volume and is in every part of our territory weekly.

makes sense. Our bag route service continues to grow in volume and is in every part of our territory weekly. With our new truck mounted forklift, we can deliver your bagged feed where you want it. We also provide a texting service to remind you when orders need to be received at the mill for your area. If interested, please contact your sales person or mill.

Currently, we are booking Inoculants and preservatives for the next growing season. Again, we will be handling Chr. Hansen products along with our in-house RiverMax inoculants. We are on our 3rd year of selling our RiverMax products and feedback from customers has been very positive. We are also currently running our spring Wind & Rain mineral booking program for our beef customers. Wind & Rain mineral with and without altosid, with 4% and 7.5% phos and mineral tubs, are available for booking. Please contact your sales person or any location for more information and booking prices.

Markets have been very volatile in the last six months; from lows in early June to an in-harvest season rally of almost \$100/ton back to retesting the June lows in mid-January. The soybean meal chart shows that we have been on a roller coaster ride since June. The question remains, where will it go from here? If we can get back to the June lows again, it would be a good place to add some coverage, and I would suggest looking at booking through May. If the crop gets a good start, I would anticipate markets moving lower through the summer. We are here to help and support you in making your farm operation succeed.

Thank you for your patronage! ■





Marathon Feed & Grain

by Todd Heise, GM of Marathon Feed & Grain
todcrishei@aol.com | 715-581-8889

Marathon Feed & Grain

Marathon Feed & Grain is here to help you and your operation be successful in 2024. This includes feeding your dairy, beef cattle, calves, pigs, horses, and chickens. If it needs feed, we can mix it. We can help with all your agronomy needs: fertilizer, seed, and spraying. Let's not forget about ginseng; we have all your crop needs: shade cloth, hardware, and chemicals. **We are your one stop shop for your agricultural needs.**

In the new year, we said goodbye to Megan Powell. We will miss her flamboyant personality, but know she has an important job at home raising her two littles. **We have welcomed Liz Reedy to the front desk of the mill.** With just a few weeks in, she's doing a great job. Tracy and Liz will be the voice you hear and face you see when you call or stop in. We look forward to this customer service team at MF&G!

A few more new faces have joined our MF&G team: Alexa Mroczenski was a great help with grain this fall. She has her CDL and delivers route. She also serves our country in the Army Reserve. Glen Kallin does our route delivery, Kevin Oxendorf and Gus Teske deliver bulk feed. The agronomy team has welcomed Andrew Winter and Zachary Witberler. We welcome them to the team, and we thank our ENTIRE staff for their hard work and support in helping you be the best you can be in your own operation.

For many years, we have worked with Marathon High School in a Work Study Program. Colton Mroczenski and Alex Pawlowicz are in this program, which is a great asset to our business as well as introducing them to a future career in agriculture. Evan Gacke is also a part time student that helps after school in the mill.

As of September 1st, Marathon Feed & Grain is wholly owned by River Country Co-op. I will stay on as the location manager, along with Christine in the office. We look forward to serving our customers and community as we always have. In November, we said goodbye to my dad, Dale Heise. He loved this business, and he loved his customers. He will always be remembered for the significant role he played in this business and his continued commitment to agriculture throughout his years. We will miss his wisdom and guidance.

In the fall of 2023, we were able to work with the Brokaw site to move some of the wetter beans to their location, freeing up a bin so we could house more corn. **As we look to the 2024 planting and growing season, we will be working closely with the Athens agronomy department to have a total of six sprayers.**

We are excited for the new year. With our locations working together, we will bring you and your operation the best in 2024.

As always, any questions, please contact me. ■



Grain Update

by Nathan LeMay, VP of Grain
nathanl@rivercountrycoop.com
715-214-5025

Talk about a head scratcher! From rumors of dead crops in July to record crops in November, I think this harvest left many of us with more questions than answers. Regardless, it has been a privilege to be involved in another record breaking year for many producers, and River Country Co-op. In this article, I will cover a few grain updates and marketing strategies.

As a Cooperative, we are constantly pondering ways to update our facilities to best suit patrons' needs. We made a number of improvements across our territory, but the massive crops would have been very challenging to handle without two key improvements: the Marathon Feed & Grain facility, and a new bin in Sheldon. MF&G has been working with River Country Co-op for years, but officially joined the team in September. Marathon's diligent staff, and 1.5 million bushel elevator, is well suited to make sure the eastern side of the co-op can effectively get their crops out of the field, and safe under a bin roof. River Country Co-op has another grain facility in Sheldon. Sheldon continues to produce an increasing amount of grain, and the last few years have been no exception. **The team decided to add a 180,000 bushel bin during the 2023 growing season.** Sheldon's producers took advantage of the added space, and filled the site again during harvest. Due to these and other improvements, along with tremendous producer support, the Co-op has been able to handle 30% more grain this harvest than last.



Record yields in certain geographical areas proceeded the Co-op to store corn in bunkers at our Dorchester location this past fall. These bunkers hold about 500,000 bushels.



Filling one of the bunkers at the Dorchester grain site.



New storage bin that was built in the summer of 2023 in Sheldon.

With a surplus of grain not only in the River Country Co-op territory, but across the United States, many farmers are faced with the challenge that high volumes present; low prices. If you find yourself wishing for that five dollar corn we turned down a few months ago, you are not alone! The USDA is predicting around a 1.5 billion bushel larger corn crop than 2022/2023, and demand that cannot keep up. Their soybean story is a little less intimidating, but we are seeing more demand switch to South America as deferred values offer a



substantial discount to U.S. values. As much as I would love to throw a bold statement about rallying prices in the near future at you, I think we need to proceed with an understanding that the market does not always have to rally. In my opinion, the lesson that we need to pull away from the last few years is the importance of a consistent strategy. **Historically, grain provides a fair price during the uncertainty of a planting season.** At the same time, inputs and grain should be in a turmoil to find their equilibrium. This is a good opportunity to contract portions of the grain in the field. River Country Co-op offers a large variety of contracts that all accomplish the same goal; you taking control of your crop instead of the market. One contract that has gained my attention with these lower prices is a Cash Plus contract. **A Cash Plus contract allows you to add value to your old crop**

while tempting the market to pay more for your new crop. To further discuss these opportunities, please reach out to one of our originators.

With another record breaking harvest in the books, the hard work begins. We will continue to strategize ways of effectively bringing the River Country Co-op territory's grain to market. Whether your grain is in Co-op bins or your bins, we would like to come along side you, and find a way to get every penny out of it. We will also be preparing and improving the Co-op's facilities to handle your grain during the 2024 harvest. **I would like to leave you with a big thank you on behalf of myself and the grain team at River Country Co-op for being a valued patron! ■**



Propane & Your Safety

by David Hartley, VP of Energy
davidh@rivercountrycoop.com | 715-723-2828

Propane is one of the most versatile products in the world. It works for heating your home, your water, drying your clothes, cooking your food and even drying corn. When used properly, propane is very safe, but when you cut corners or handle it improperly bad things can happen.

...your safety is our #1 priority.

At River Country Co-op, your safety is our #1 priority. All of our employees are CETP (Certified Employee Training Program) certified. CETP is the national training program for the propane industry. Each employee, when they are hired, must attend a

week of training and must pass several tests to certify they understand the properties and handling of propane. All employees must also take refresher training and testing every 3 years. Along with training, we follow all of the NFPA 58 (National Fire Protection Association) rules for propane. NFPA 58 sets all the rules for propane handling, including leak checks, regulators, tank placement, as well as all other aspects of propane.

I get questions quite frequently as to why we require a leak check when you run out of propane. **Did you know that 98% of all propane incidents happen in an out of gas situation?** NFPA 58 requires that all out of gas situations MUST have a leak check performed on the system before it can be placed back in service. It is also why we encourage everyone



Board members inspecting the new bulk fuel truck purchased in 2023. This unit has the capacity to haul 6,500 gallons of fuel.

to be on our scheduled delivery program. For scheduled delivery customers, we use a computer program which takes into account the temperature and past usage history, as well as the forecasted weather conditions to calculate your tank level to insure uninterrupted supply of propane.

As I said before, your safety is our #1 priority. Some companies say it but don't actually mean it. At your cooperative, not only do we mean it, but we live by it. You have a lot of choices when it comes to your propane supplier. You can be confident in choosing River Country Co-op to know that your safety is in good hands. ■





C-store Updates



by Brad Podevels, VP of Retail-East
bradp@rivercountrycoop.com | 715-897-2822

Back in early September, we purchased Drescher Oil Convenience Store in Neillsville, WI. The store is located on the corner of Hwy 10 & 73, formally the BP station. **We opened for business on September 12th as River Country Neillsville Cenex.** Like all of our stores, we have a great selection of c-store items. In December, we added Hunt Brothers Pizza to the location to give us that grab and go hot food option. All of the top tier Cenex gas and diesel, along with off diesel and kerosene at the pumps, gives our customers that high quality Cenex fuel. This location also included a bulk fuel plant. Besides a prime location, it gives River Country Co-op the opportunity to better serve our customer base in the Neillsville and surrounding southern area.



Laura Anderson, our manager at the Neillsville C-Store location, in front of the new Hunt Brothers Pizza display.

Athens C-Store

This February, we will be converting some of our cooler doors into a beer cave at our Athens C-Store. With limited floor space for beer inventory, this will give us a better option to expand our product line. It'll give the customer the opportunity to grab a nice cold beverage to take along with them.



All of our River Country stores went through a Cenex image upgrade last fall and summer.

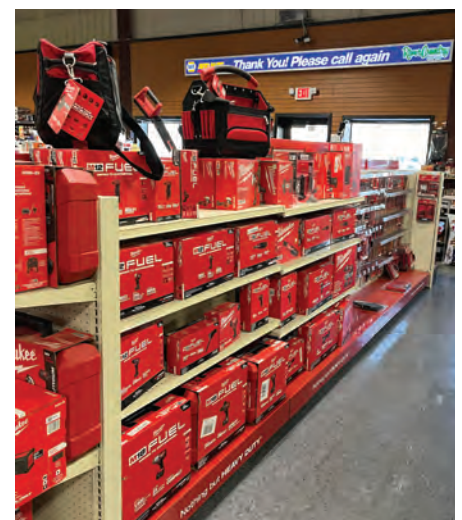
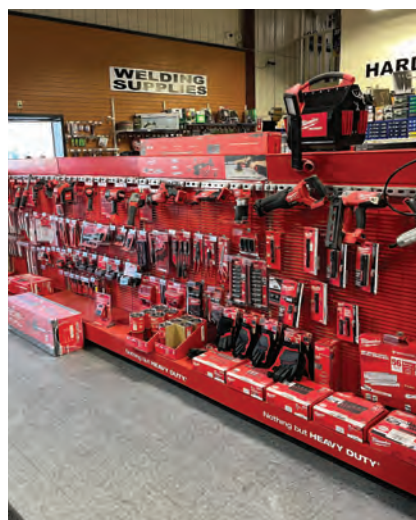
New canopy facial, improved LED canopy lighting, lighted striping, a bright blue halo image, lighted LED Cenex butterfly, and new LED digits were installed in our price signs. These upgrades really make our Cenex stores stand out from our competition.



Napa

All three of our Napa stores now carry a great selection of Milwaukee battery operated tools. Milwaukee Tools are some of the highest quality products on the market.

Make sure you take advantage of our spring filter sale. It's a great way to save money on high quality filters. ■





Supporting Local Agriculture



by Heather Barrows, VP of Retail-West | heatherb@rivercountrycoop.com | 651-216-6510

Being an agricultural Co-op, our stores are always trying to find a way of supporting local farms in the area. One way we try to do that is by featuring products that source their ingredients from local farms around the state.



In select stores located on the west side of the state, we carry Yellowstone Cheese curds. Yellowstone Cheese is located in Cadott, Wisconsin,

and has been producing handcrafted cheeses since 2007. Originally, Yellowstone Cheese only used milk from their farm, however now purchase it from local farms and have it hauled in, dumped into their pasteurizer, and crafted into a variety of cheeses.

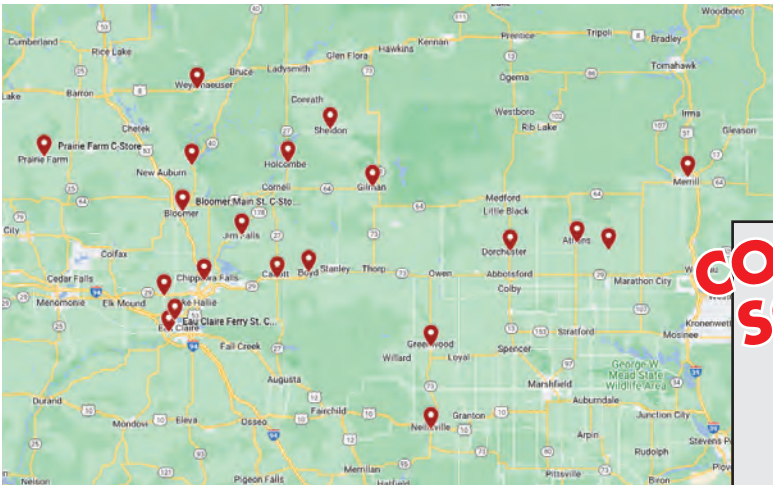
Being an agricultural Co-op, our stores are always trying to find a way of supporting local farms in the area.

Over on the east side of the state, the stores sell Nasonville Cheese products; again, a dairy that started small with milk from just 50 cows. Nasonville



dairy went through some turbulent times and ownership changed hands several times, ending with it being owned by the Heiman family. Today, they run a large operation that purchases milk from more than 190 local farms to produce over 160,000 pounds of cheese each day.

Support your local farmers and stop in to any of our c-stores to pick up some delicious Wisconsin cheese! ■



Map of all the River Country Co-op Cenex C-stores



Lake Holcombe C-store



Eau Claire Travel Center

As of March 1st, 29 Pines Family Restaurant, within the Eau Claire Travel Center, will be opening under new management, "Wheaton Family Restaurant". This will be related to the Cadott Family Restaurant and the Edgar Family Restaurant.

Welcome to the Team!



Serena Bakke
*Agronomy Accounting
Owen*



Alexa Mroczenski
Marathon City



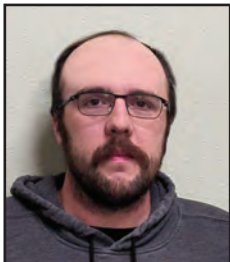
Liz Reedy
Marathon City



Brenda Pogodzinski
Owen Office



Andrea Ederer
Owen Office



Gus Teske
Marathon City



Glen Kallin
Marathon City



Andrew Winter
Marathon City



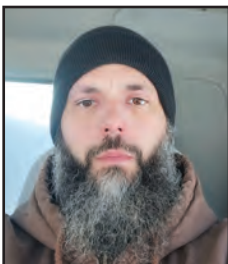
Zachary Witberler
Marathon City



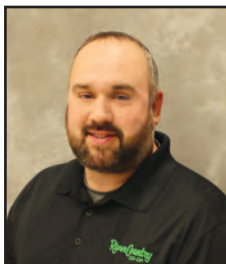
Kevin Oxendorf
Marathon City



Justin Voda
Energy Sales



Jeremia Cole
*Applicator/LP Driver
Dorchester*



Chris Guden
*Fuel Driver
Marathon City*



Mitchell Muelbeck
*Applicator/Agronomist
Marathon City*



Jim McKittrick
LP Service



Cyrus Dehnke
Marathon City



Randy Lein
*Fuel Transport
Chippewa Falls*



Josh Young
*Fuel/Propane Driver
Marathon City*



Ken Abitz
Marathon City



Emily Frazer
Agronomist/Accounting
Bloomer



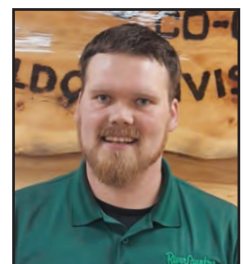
Jon Nelson
Agronomist/Applicator
Sheldon



Whitney Coleman
Dairy Specialist



Stacie Van Wey
Energy Office Manager
Marathon City



Dan Carillon
New Branch Manager
Sheldon



Mandy Becherer
C-store Manager
12-Mile Holcombe



Laura Anderson
C-store Manager
Neillsville



Gabby Campbell
C-store Manager
Greenwood



Jenny Tallman
C-store Manager
Lake Holcombe



Phil Wester
New Agronomy Op. Mgr
Bloomer

Be in the Know

EVENTS

2/22 Cattle Owner Wkshop
Les & Jim's Lincoln Lanes, Merrill
5:30 pm - 8 pm

2/24 Cattle Owner Wkshop
Thorp Quonset Hall, Thorp
11 am - 1:30 pm

2/29 Dairy Producer Conf.
Sleep Inn & Suites/29 Pines
Eau Claire
9 am - 3 pm

3/5-3/6 EC Farm Show
Chippewa Valley Expo
Center, Eau Claire
9 am - 3:30 pm

4/11 Ladies Night Out
29 Pines, Eau Claire, WI
5 pm - 8 pm

PROMOS/SALES

**1/2-2/29 Beef Mineral
Booking Promo**
Contact Jim Meyer,
Ashley Dums or Samantha
Rasmussen for details.

3/1-4/30 Spring Filter Sale
At all RCC NAPA locations.

Like & Follow
us for upcoming
details!





2023 Scholarship



Isabella Aguilera

Graduated: Abbotsford High School
Future Education: Fox Valley Technical College
Intended Degree: Baking & Pastry Prod.
Hobbies/Activities: Cake decorating and royal icing cookies



Regina Frisle

Graduated: Prairie Farm High School
Future Education: UW-Madison
Intended Degree: Animal Science/Ag Business
Hobbies/Activities: FFA, FCLA & showing animals at the state fair



Jaylinn Artac

Graduated: Greenwood High School
Future Education: Mid-State Technical College
Intended Degree: Nursing
Hobbies/Activities: FFA, volleyball, CNA at Marshfield hospital



Nicolaus Jensen

Graduated: Colfax High School
Future Education: CVTC
Intended Degree: Ag Management
Hobbies/Activities: Football, basketball & track



Rebecca Baier

Graduated: McDonnell High School
Future Education: UW-River Falls
Intended Degree: Animal Science
Hobbies/Activities: Softball, reading, sewing & being outside exploring



Jessica LaGesse

Graduated: Bloomer High School
Future Education: CVTC
Intended Degree: Business Management
Hobbies/Activities: Showing cattle & horses



Reagan Borchardt

Graduated: Edgar High School
Future Education: UW-River Falls
Intended Degree: Animal Science
Hobbies/Activities: Volleyball, basketball, softball & helping on the family farm



Rachel Laird

Graduated: Cornell High School
Future Education: CVTC
Intended Degree: Animal Science
Hobbies/Activities: Showing steer at the fair & playing piano



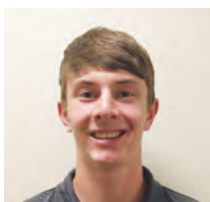
Kendalyn Dahlke

Graduated: Edgar High School
Future Education: UW-River Falls
Intended Degree: Animal Science
Hobbies/Activities: Volleyball, softball & showing beef cattle



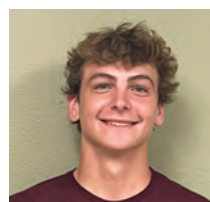
Levi Lindsay

Graduated: Cadott High School
Future Education: UW-River Falls
Intended Degree: Crops & Soil Science
Hobbies/Activities: Hunting and showing cattle



Jacob Eckert

Graduated: Medford High School
Future Education: UW-River Falls
Intended Degree: Crop & Soil Science
Hobbies/Activities: Market lambs & steers for sale, tractor driving, working on vehicles, baseball & hunting



Aiden Mahr

Graduated: Stanley-Boyd High School
Future Education: UW-La Crosse
Intended Degree: Ag Business
Hobbies/Activities: Hunting, fishing, snowmobiling, baseball, FFA & FCLA

Recipients



Holly Nesvacil

Graduated: Cadott High School
Future Education: UW-River Falls
Intended Degree: Crops & Soil Science
Hobbies/Activities: Showing dairy heifers



Kaylee Rinehart

Graduated: Greenwood High School
Future Education: UW-River Falls
Intended Degree: Animal Science/
Pre-Vet
Hobbies/Activities: Rodeo with horses,
hiking & reading



Drew Stieglitz

Graduated: Loyal High School
Future Education: Ripon College
Intended Degree: Exercise Science
Hobbies/Activities: Hunting, fishing,
football, basketball & baseball

Retirements



Lois Bunkelman
October 2023



Mary Loos
March 2024

RiverCountry CO-OP

SCHOLARSHIPS AVAILABLE

Awarding 15 Scholarships

Application deadline is

MARCH 1, 2024





1080 West River Street
Chippewa Falls, WI 54729

Contact us...

12 Mile CENEX
(715) 532-9654

Abbotsford NAPA
(715) 223-6371

Agri-Tech/Bloomer Grain
(715) 568-2934

Antigo Country Store
(715) 623-3516

Athens Agronomy
(715) 257-7676

Athens CENEX
(715) 257-7587

Athens Feed Mill
(715) 257-7591

Bloomer CENEX
(715) 568-2343

**Bloomer CENEX Shop/
Auto Value Parts Store**
(715) 568-2170/
(715) 568-2191

Boyd CENEX
(715) 667-3595

Boyd Feed Mill
(715) 667-3245

Brokaw Grain
(715) 870-2455

Cadott CENEX Truckstop
(715) 289-3953

Chippewa Falls CENEX
(715) 723-7005

Chippewa Falls Main Office
(715) 723-2828

Dorchester Agronomy
(715) 654-5401

Dorchester CENEX
(715) 654-5559

Dorchester Grain
(715) 654-6065

Eau Claire Ferry St. CENEX
(715) 832-0045

Eau Claire Third St. CENEX
(715) 835-2003

**Eau Claire Travel Center
- 29 Pines Restaurant & Bar**
(715) 874-2929
- CENEX Store
(715) 874-0290
**- Sleep Inn & Suites
Conference Center**
(715) 874-2900

Edgar CENEX
(715) 352-2414

Greenwood CENEX
(715) 267-6105

Jim Falls CENEX
(715) 382-4554

Lake Holcombe CENEX
(715) 595-4112

Marathon Agronomy
(715) 443-6100

Marathon City NAPA
(715) 443-3460

Marathon Feed & Grain
(715) 443-2424

Merrill CENEX
(715) 536-5600

Merrill Country Store
(715) 536-2491

Neillsville CENEX
(715) 743-2905

New Auburn CENEX
(715) 967-2171

Owen Agronomy
(715) 229-4621

Owen Feed Mill
(715) 229-4613

Owen Main Office
(715) 654-5134

Owen NAPA
(715) 229-2181

Prairie Farm CENEX
(715) 455-1490

Sheldon Agronomy
(715) 452-5242

Sheldon CENEX/Shop
(715) 452-5111

Sheldon Feed Mill
(715) 452-5116

Weyerhaeuser CENEX
(715) 353-2612